

VT825ii

Remote Monitoring System

IT Infrastructure monitoring & Control

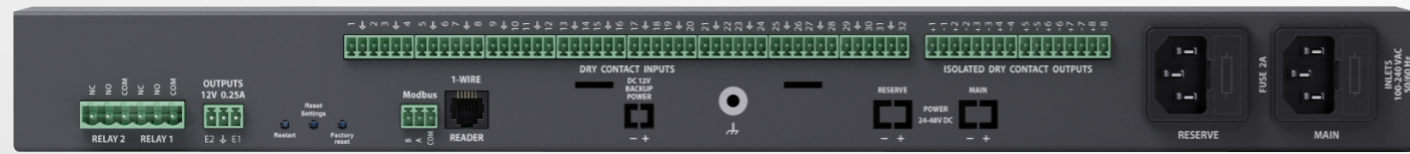


*Monitoring your
infrastructure 24/7*

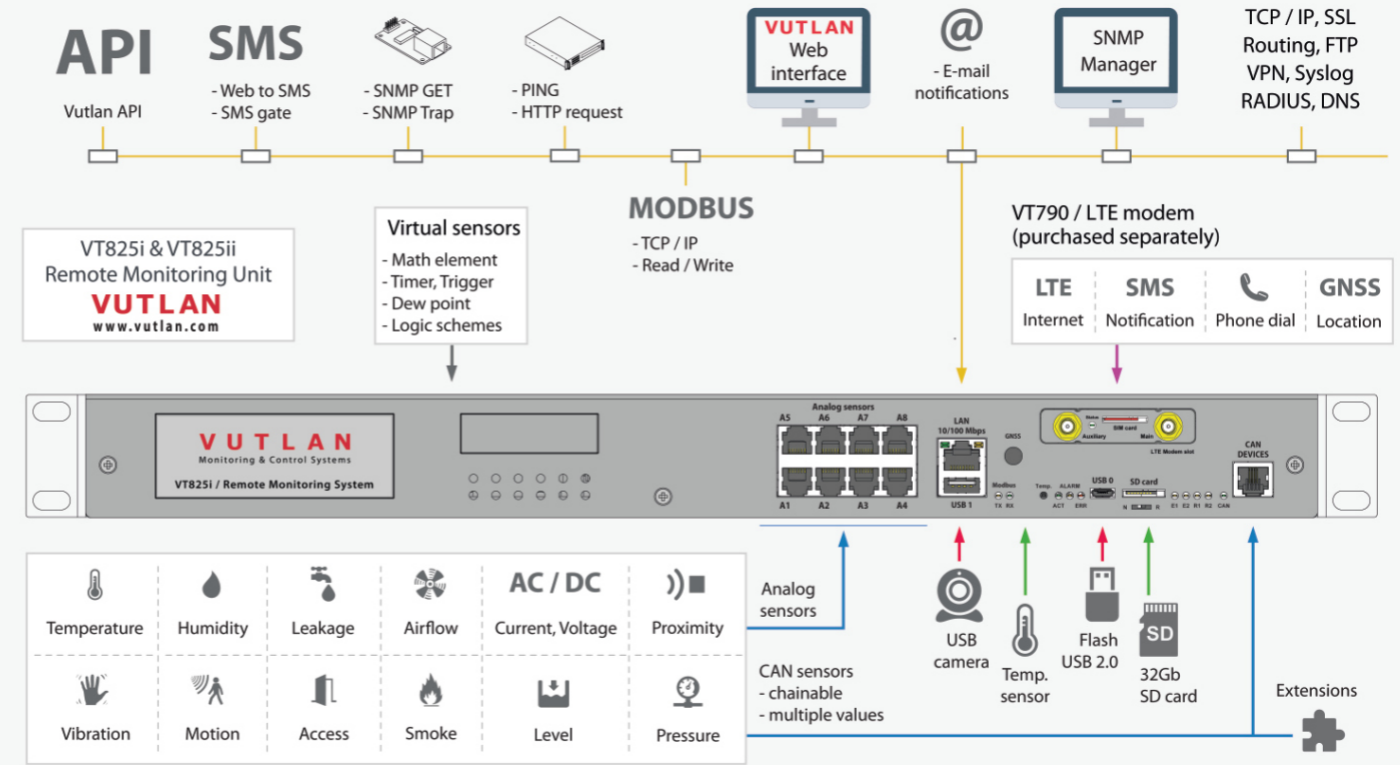
VT825ii

Remote Monitoring System

Monitor 150 sensors, 1000 elements,
Redundant Power & Network



Example connection

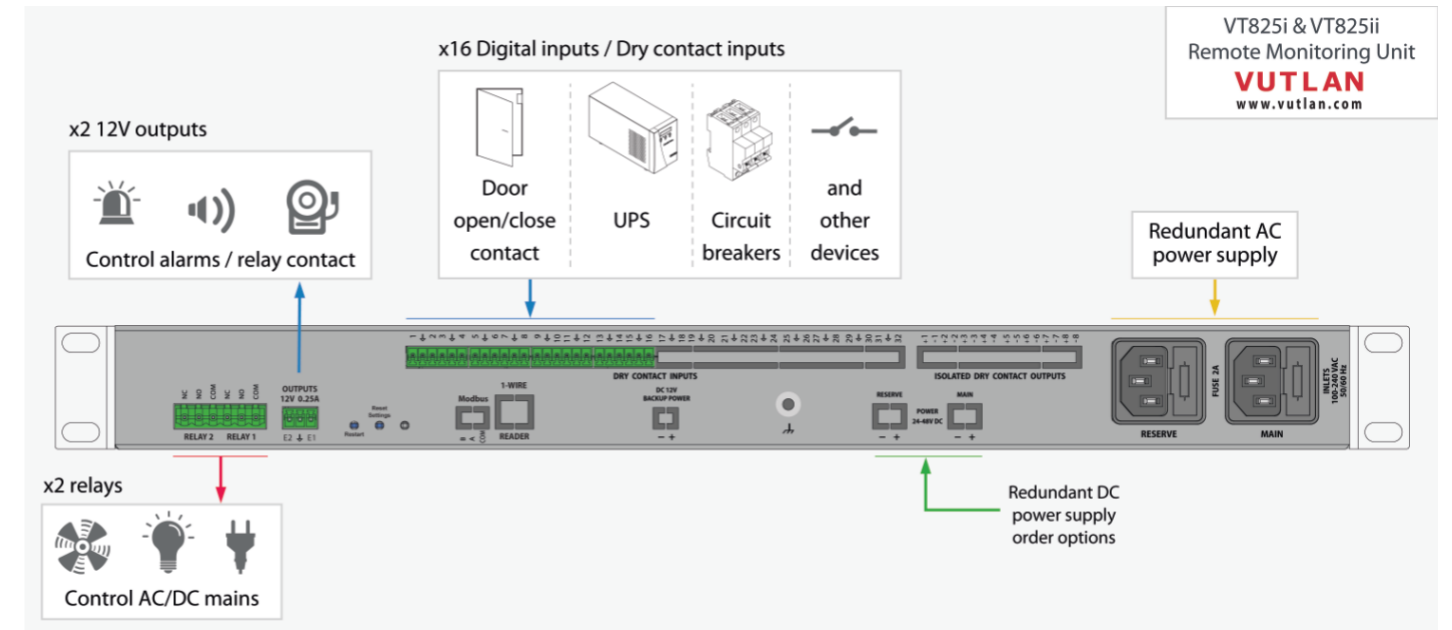


Specifications:

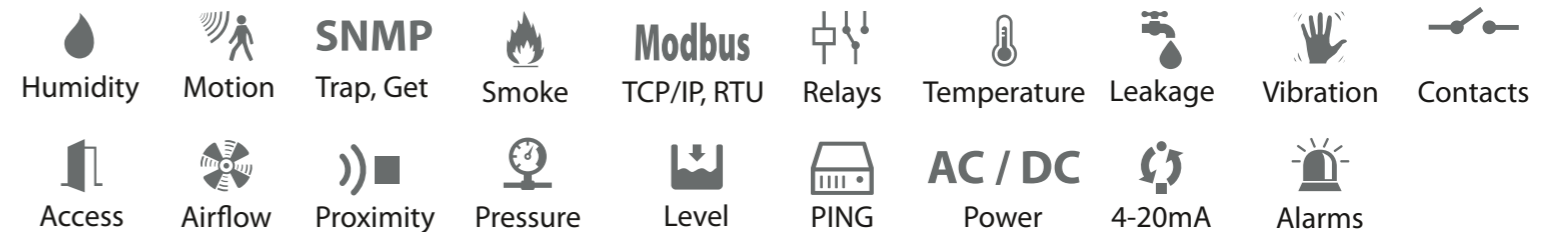
CPU Speed / RAM / OS	600mHz / 128Mb / Linux v.5.40
Ethernet	10/100Mbps
Redundant power	x2 230 V AC or x2 24-48 V DC power inputs
USB port	For USB camera, USB flash, USB hub
Analog ports	x8 ports for sensors (extendable)
CAN port	x1 port (up to 32 sensors & devices)
Dry Contact inputs	x16 digital inputs
Relays (12VDC)	x2 outputs, 0.25A each
Relays (NC NO COM)	x2 (max. 10A for AC) (9-30V for DC)
SD card slot	Up to 512 Gb SDHC
LTE slot modem	Ethernet, SMS, GPS (ordered separately)
Extension	3 years
Warranty	3 years

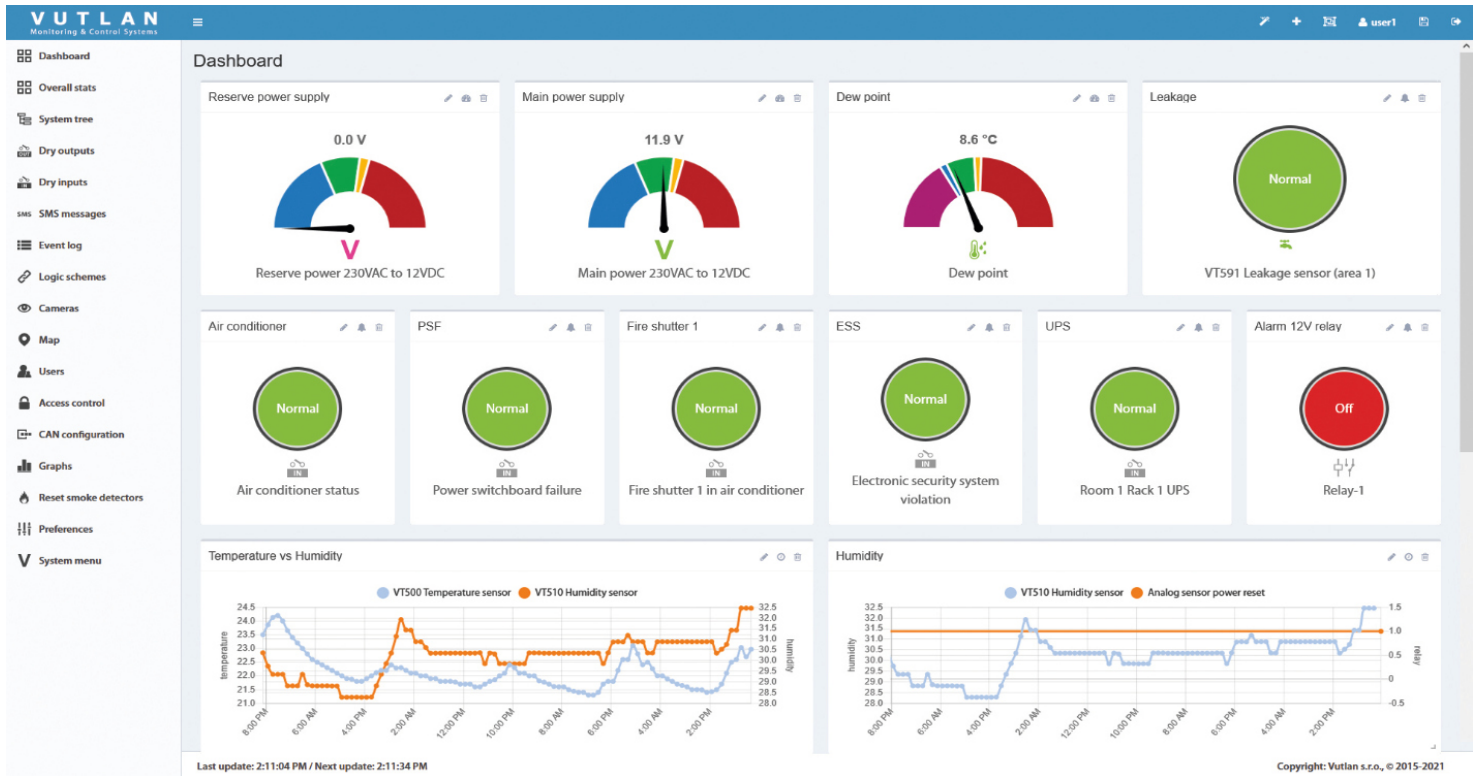
Supports:

- Centralized Monitoring & Control**
 - Responsive Web Interface
 - SNMP v1, v2c, v3
- Scalability**
 - Extension units, LTE modem, RFID
 - Modbus TCP/IP, 4-20mA, 0-10V, Analog, CAN
- Improved security**
 - OpenVPN, SSL, HTTPS
 - Three-tier data access permissions with login
- Protocol support**
 - DHCP, HTTP, HTTPS, DynDNS, SMTP, RADIUS, Syslog, NTP server, HTTP request
- API**
 - Application Programming Interface
 - Source available on-line
- System Usability**
 - Multi-language mobile interface
 - First-time wizard
 - Sensor graphing for single and multiple sensors
- Virtual sensors / devices / elements**
 - PING, Timers, Triggers, Logic schemes, SNMP GET
 - IP cameras, Groups, Math
- Notifications and alerts**
 - E-mail, SMS, Phone dial, SNMP Traps, Web-to-SMS, SMS link
- Logging**
 - SD card, USB flash, E-mail, FTP



Monitor & Control





Vutlan Partner Network

Vutlan is working with Distributors / Solution providers, and Integrators all around the world.

+50
BRANCHES

+37
COUNTRIES



Vutlan s.r.o. (LTD)
43 ul.Svornosti,
82106, Bratislava,
Slovak Republic, E.U.
T: +421 2 4524 1440
E: sales@vutlan.com
www.vutlan.com

VUTLAN
Monitoring & Control Systems