



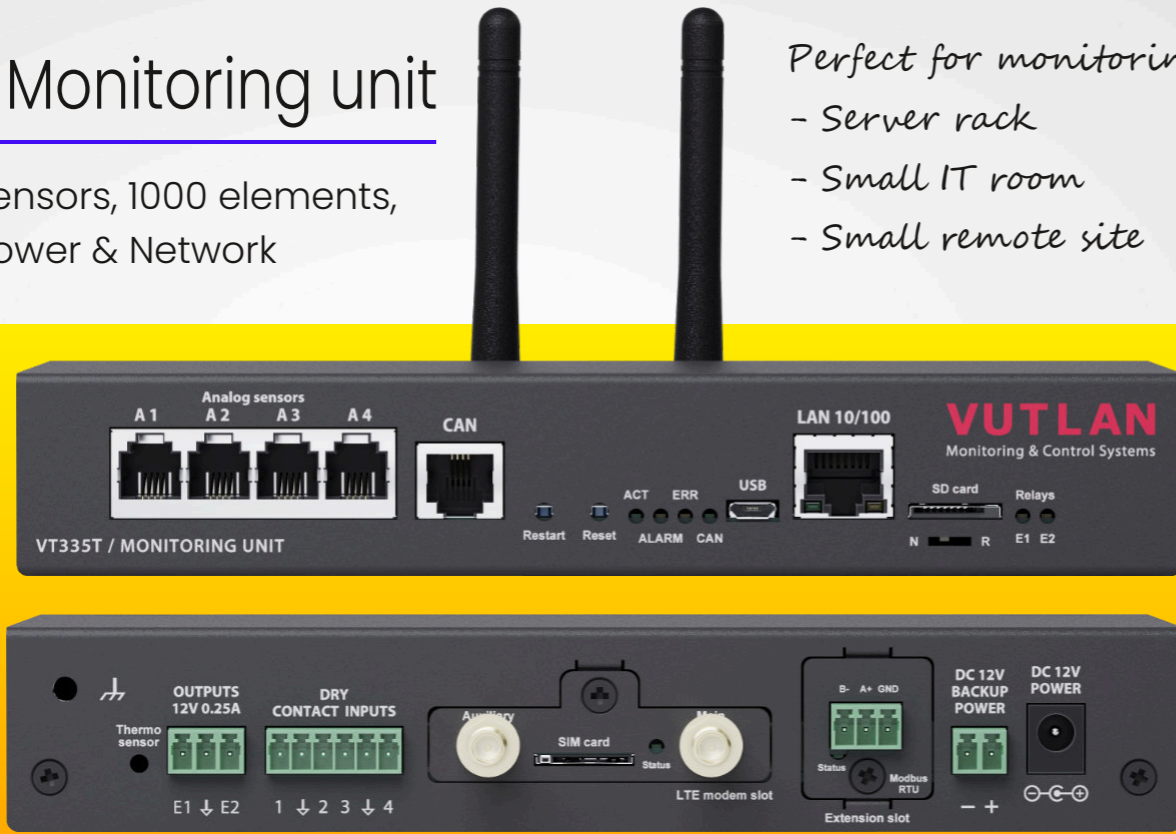
# Monitoring unit VT335t

# VT335t / Monitoring unit

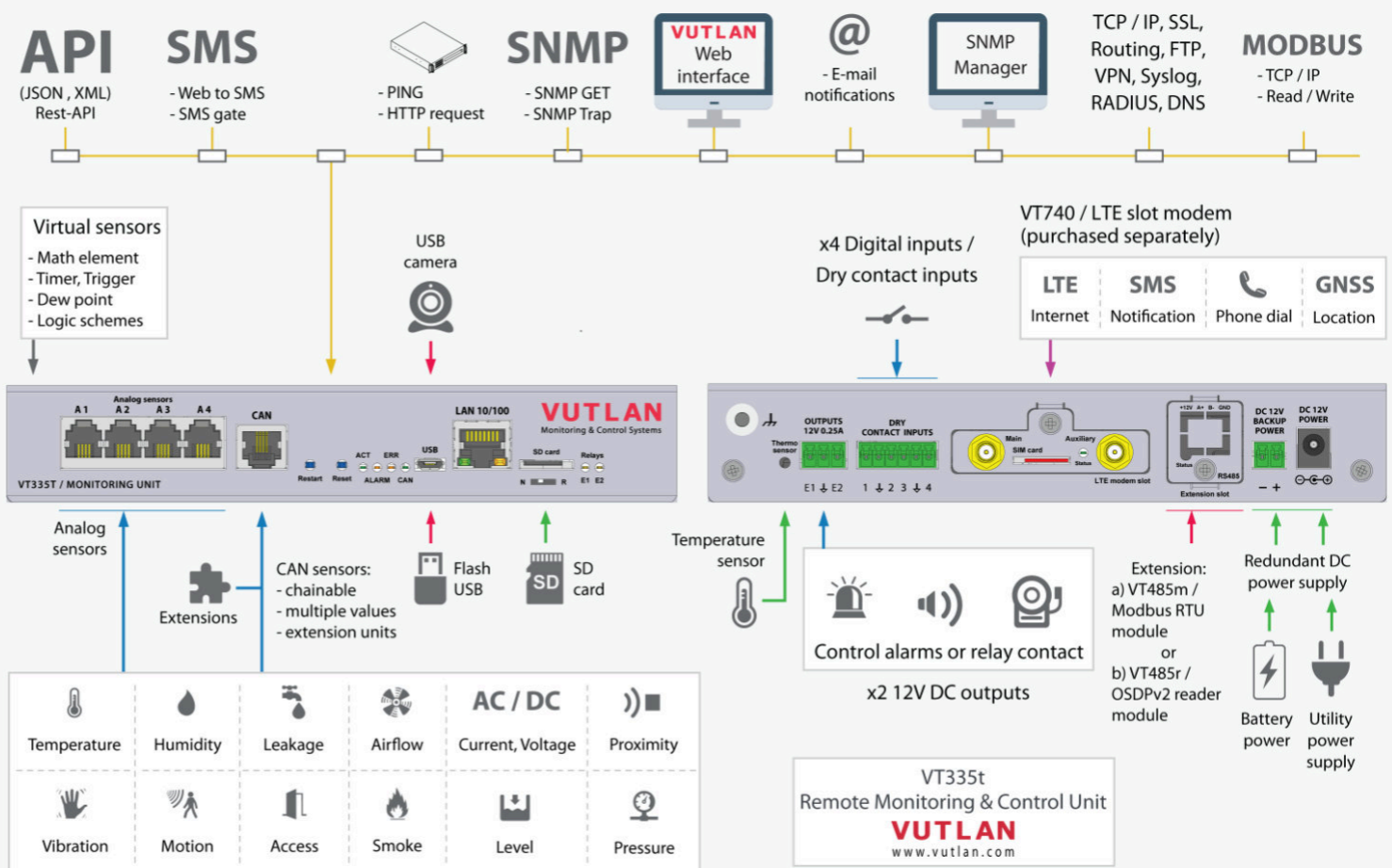
Monitor 150 sensors, 1000 elements,  
Redundant Power & Network

Perfect for monitoring:

- Server rack
- Small IT room
- Small remote site



## Example connection



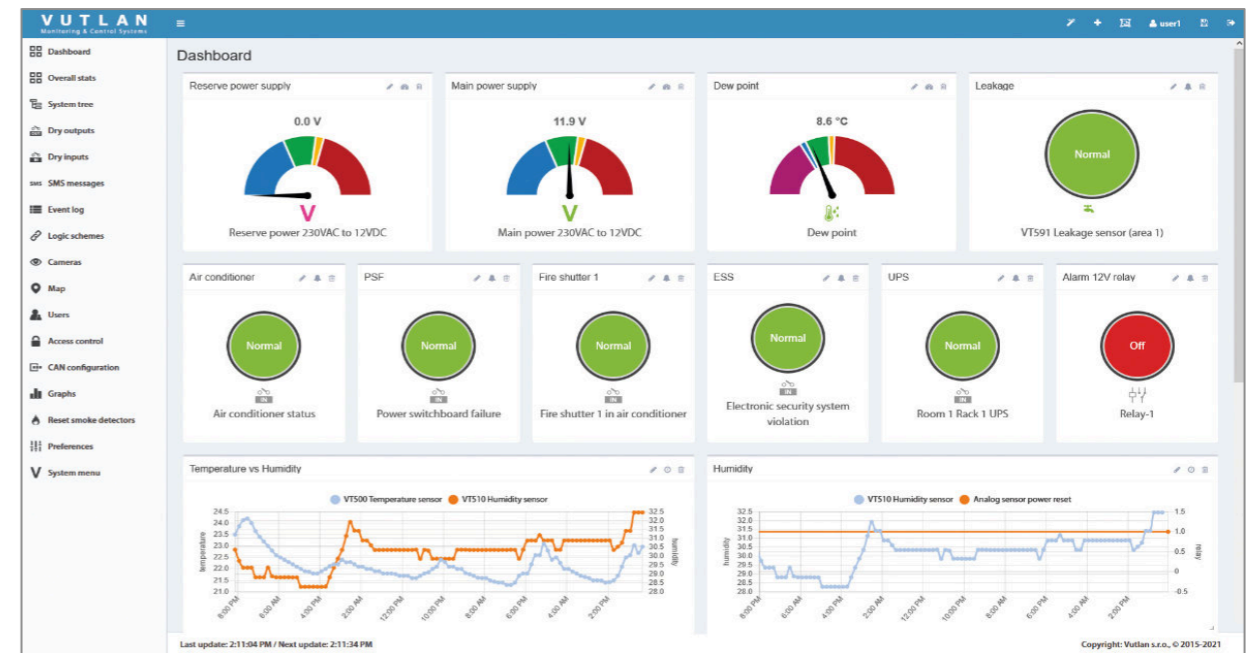
## Specifications

CPU Speed / RAM / OS	2 cores, 720mHz / 128Mb / Linux v.6.2
Ethernet	10/100Mbps
Redundant power	x2 12V DC inputs
USB port	For USB camera, USB flash, USB hub
Analog ports	x4 ports for sensors (extendable)
CAN port	x1 port (max. 32 sensors & extensions)
Dry Contact inputs	x4 digital inputs
Relays (12VDC)	x2 outputs, 0.25A each
SD card slot	Up to 512 Gb SDHC
LTE slot modem	Ethernet, SMS, GPS (ordered separately)
Mounting	Desktop (Wall, DIN, & 19" brackets as extensions)
Extensions	VT485m / Modbus RTU or VT485r / OSDPV2 reader extension
Warranty	3 years
Support	On-line portal

## Supports

- Centralized Monitoring & Control**
  - Responsive Web Interface
  - SNMP v1, v2c, v3
- Scalability**
  - Extension units, LTE modem, OSDPV2, Modbus RTU
  - Modbus TCP/IP, 4-20mA, 0-10V, Analog, CAN
- Improved security**
  - OpenVPN, SSL, HTTPS
  - Three-tier data access permissions with login
- Protocol support**
  - DHCP, HTTP, HTTPS, DynDNS, SMTP, RADIUS,
  - Syslog, NTP server, HTTP request
- API**
  - Application Programming Interface
  - XML, JSON
- System Usability**
  - Multi-language mobile interface
  - First-time wizard
  - Sensor graphing for single and multiple sensors
- Virtual sensors / devices / elements**
  - PING, Timers, Triggers, Logic schemes, SNMP GET
  - IP cameras, Groups, Math
- Notifications and alerts**
  - E-mail, SMS, Phone dial, SNMP Traps, Web-to-SMS, SMS link
- Logging**
  - SD card, USB flash, E-mail, FTP

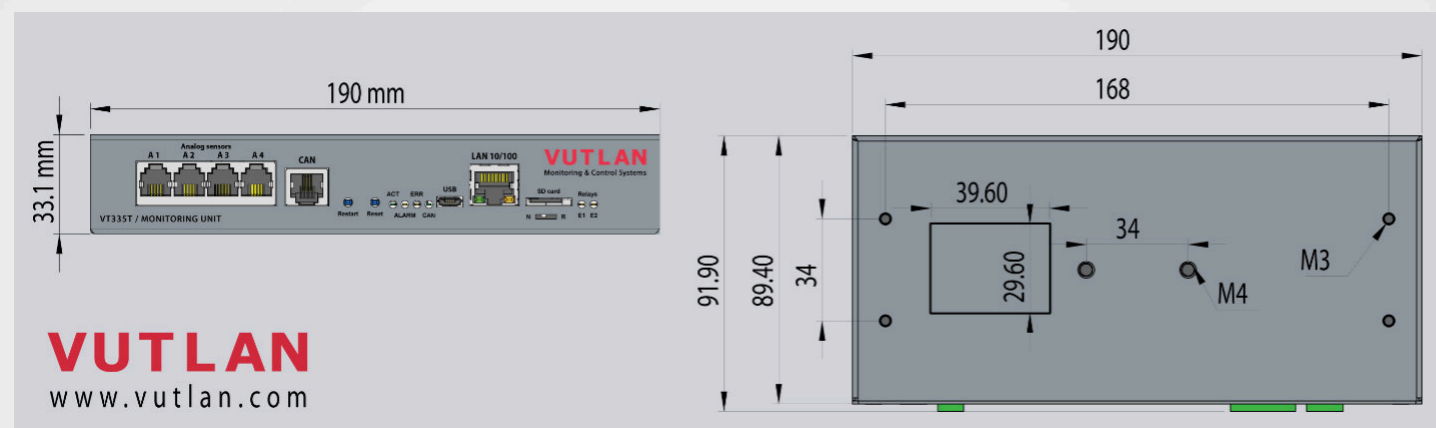
## Embedded Web Interface



## Monitor & Control

- Humidity
- Motion
- SNMP Trap, Get
- Smoke
- Modbus TCP/IP, RTU
- Relays
- Temperature
- Leakage
- Vibration
- Contacts
- Access
- Airflow
- Proximity
- Pressure
- Level
- PING
- AC / DC Power
- 4-20mA
- Alarms

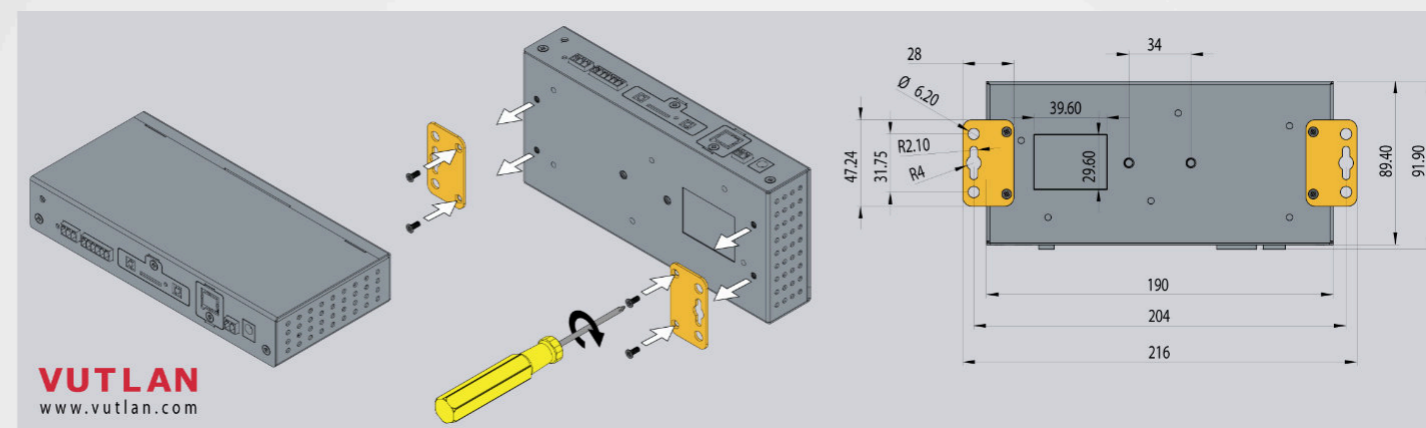
### VT335t dimensions



**VUTLAN**  
www.vutlan.com

### VT123 / Wall mounting brackets

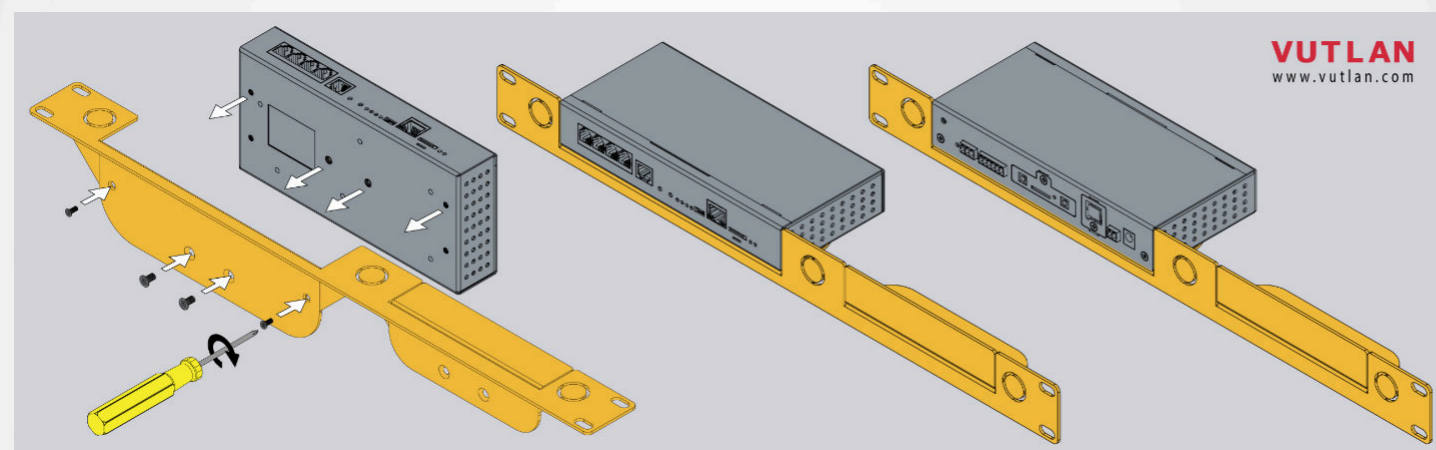
Ordered separately



**VUTLAN**  
www.vutlan.com

### VT122t / 19" 1U bracket (for x1 VT335t, x1 VT408)

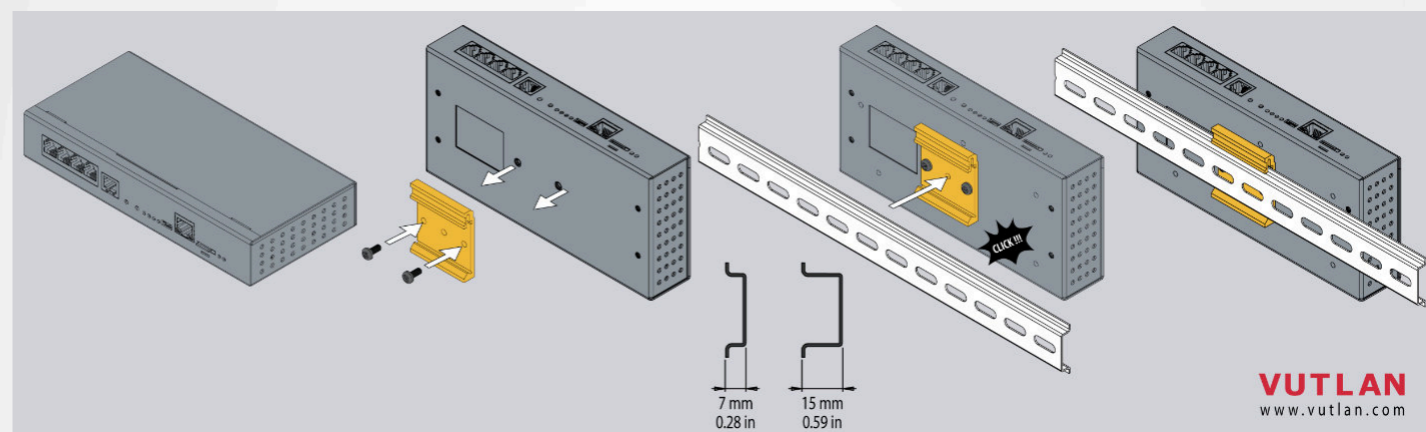
Ordered separately



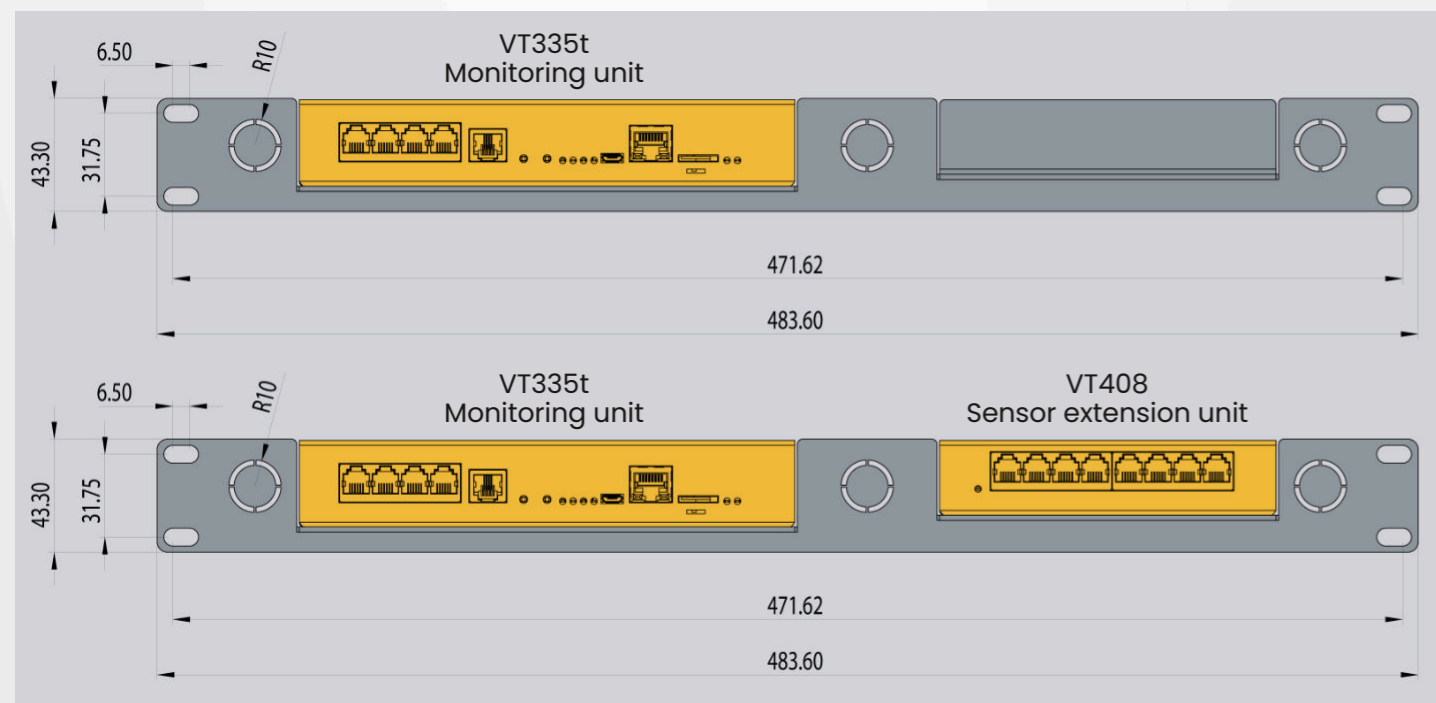
**VUTLAN**  
www.vutlan.com

### VT124 / DIN rail holder

Ordered separately

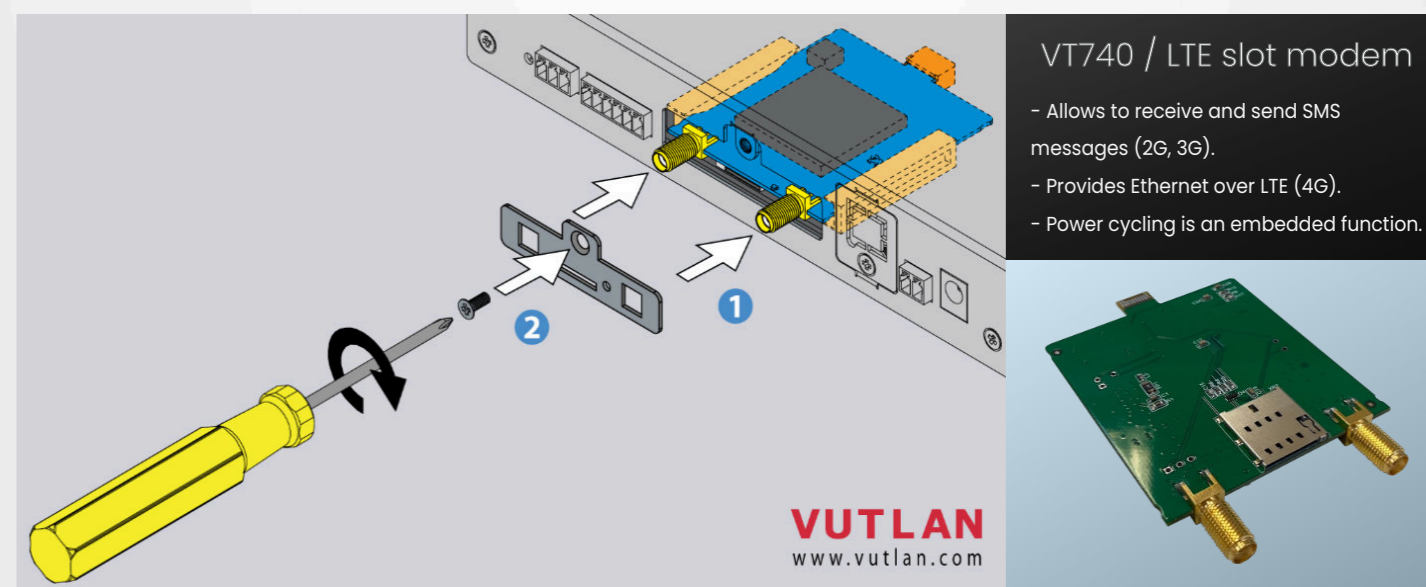


**VUTLAN**  
www.vutlan.com



### VT740 / LTE slot modem

Ordered separately

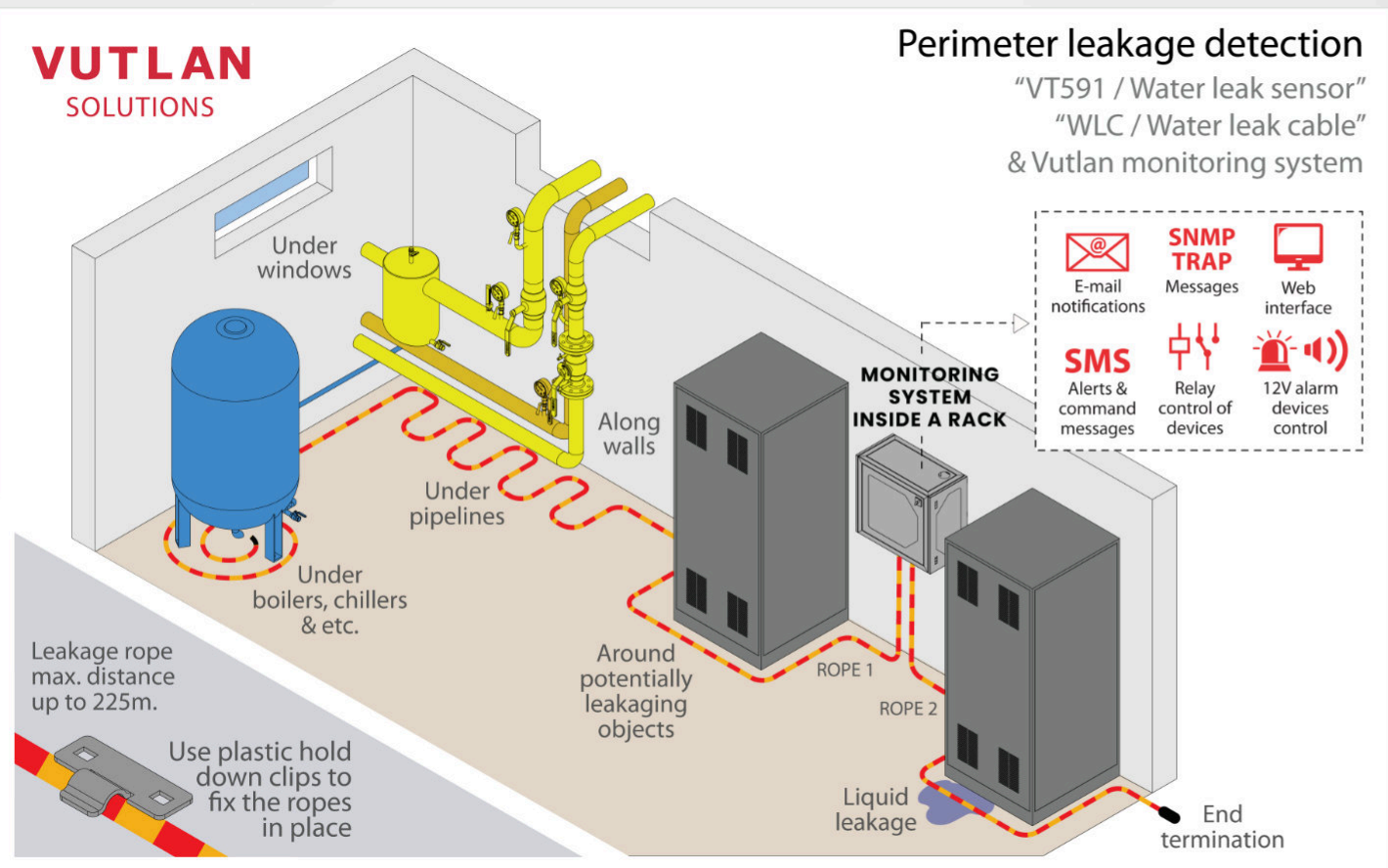


#### VT740 / LTE slot modem

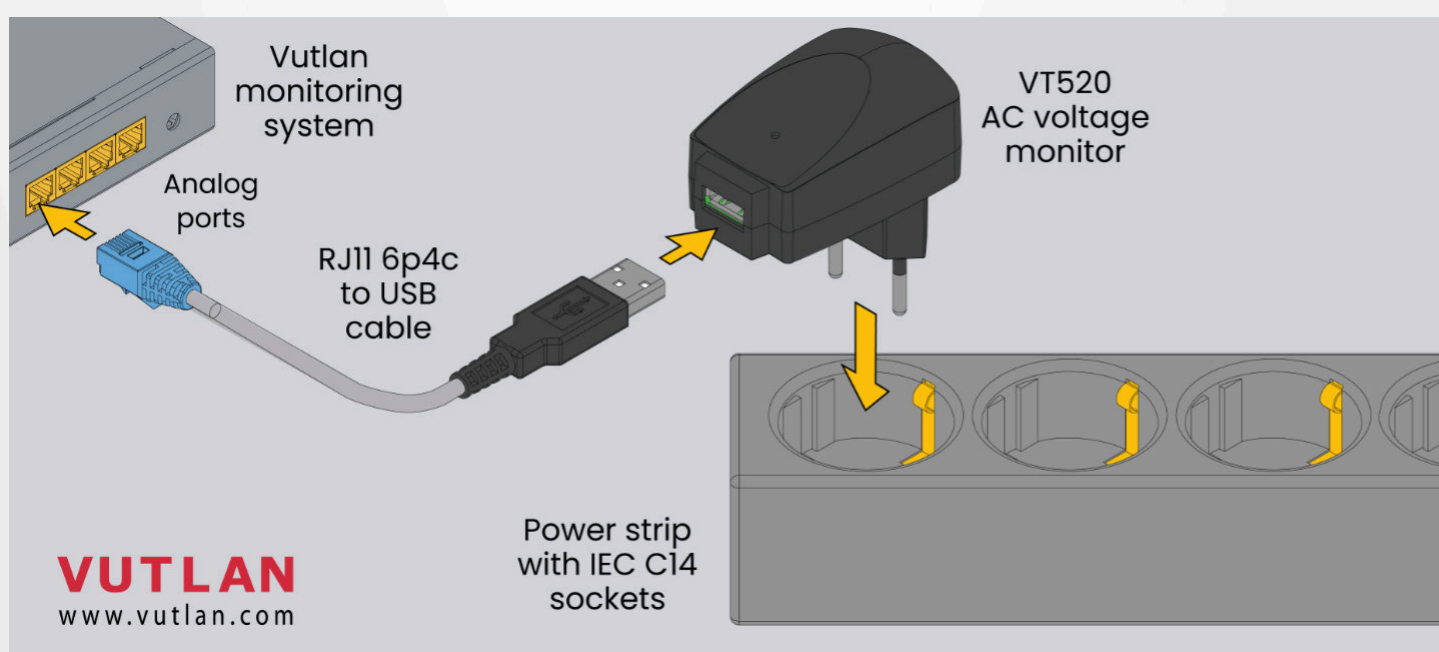
- Allows to receive and send SMS messages (2G, 3G).
- Provides Ethernet over LTE (4G).
- Power cycling is an embedded function.

**VUTLAN**  
www.vutlan.com

### Leakage detection

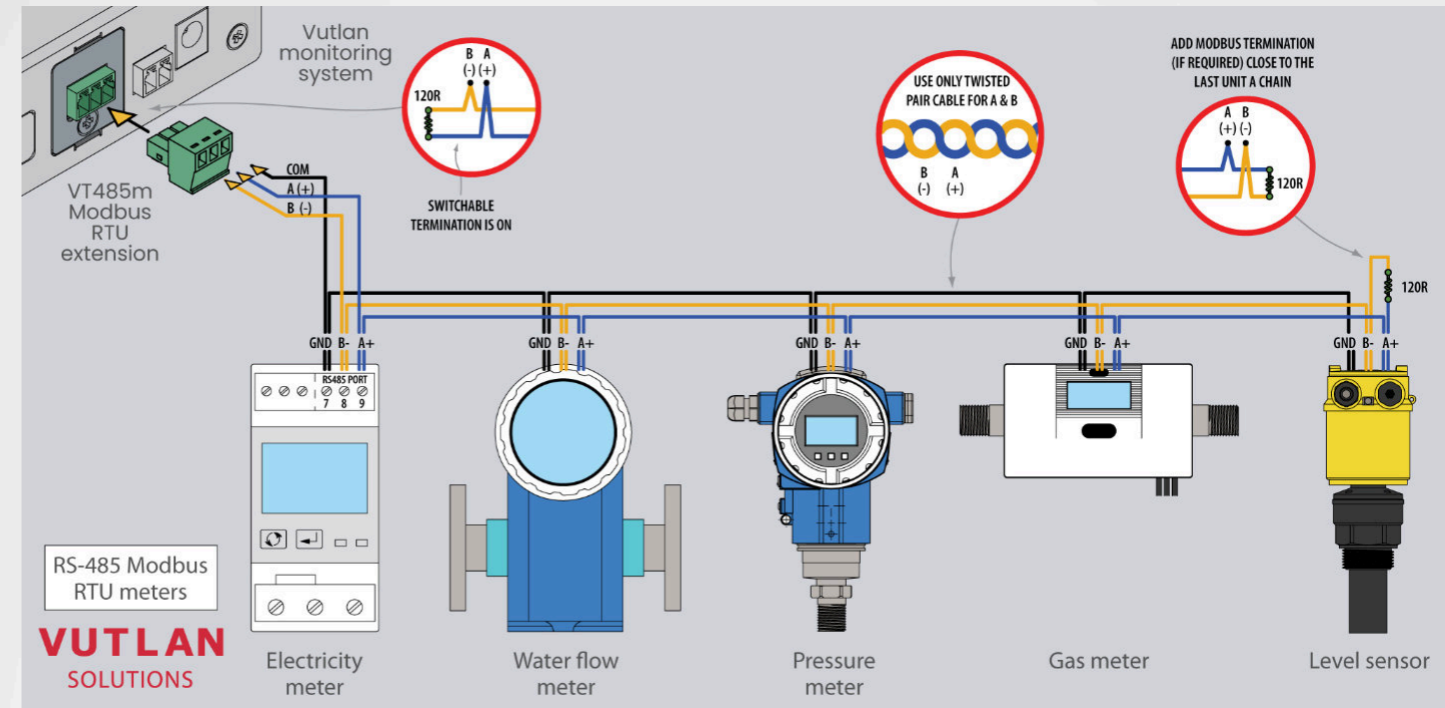


### Measure AC voltage 0-246V

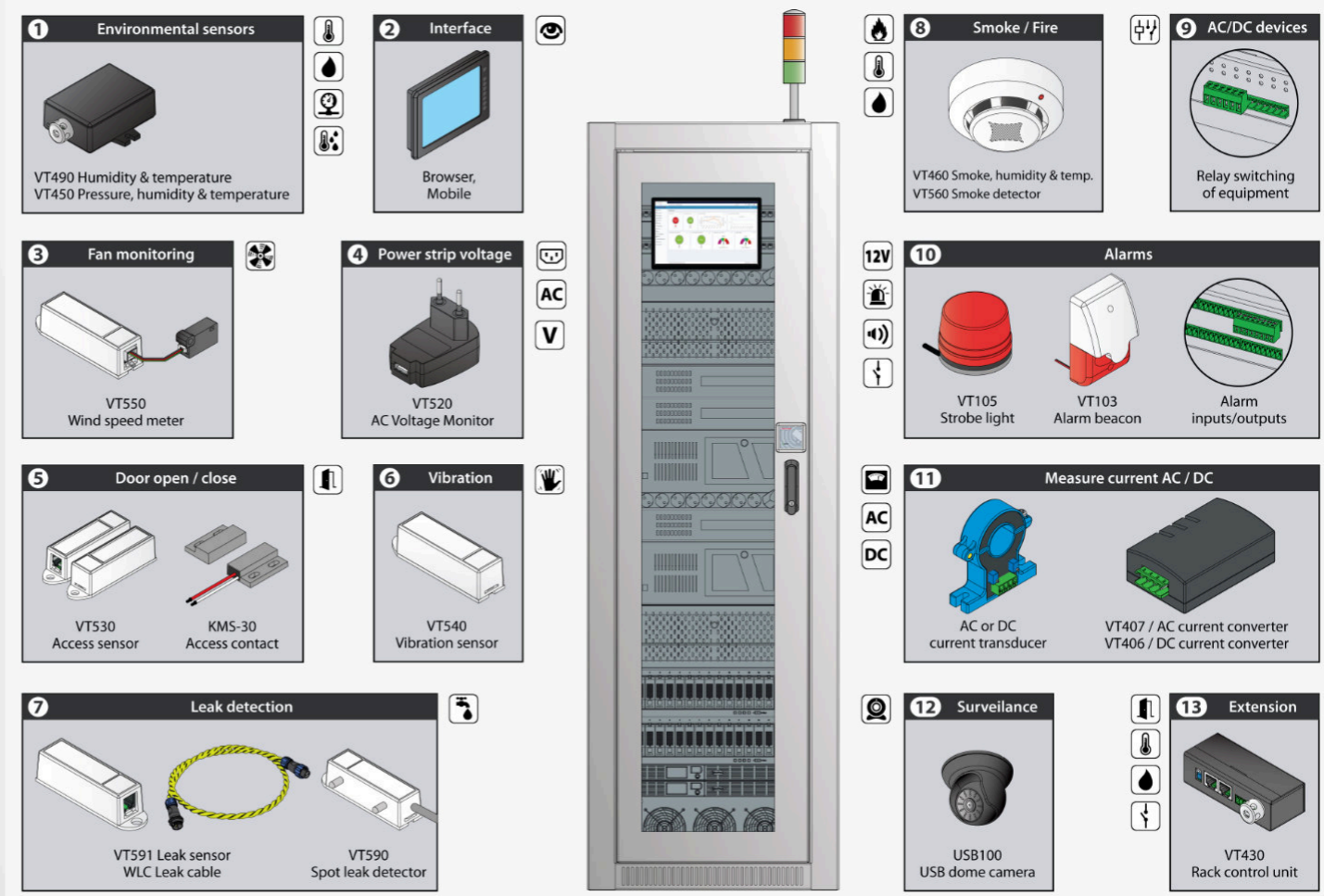


### VT485m / Modbus RTU extension

Ordered separately



### Server Rack & Data Center monitoring



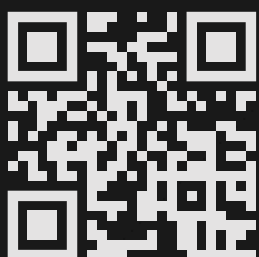


# Vutlan Partner Network

Vutlan is working with Distributors,  
Solution Providers and Integrators  
all around the world.

**65+**  
PARTNERS

**+37**  
COUNTRIES



Vutlan s.r.o. (LTD)  
43 ul.Svornosti,  
82106, Bratislava,  
Slovak Republic, EU  
sales@vutlan.com  
www.vutlan.com

# VUTLAN